

Mary Duty's Pocket Pattern by Elaine Smith

Instructions

Step 1: Gather scrap fabrics -the original had 5 different fabrics

Step 2: Front panel has three sections referred to as top, middle, and bottom.

The bottom section is made by piecing small pieces (2 ½ inches by 4 ½ inches) to make two 9 inches by 6 ½ inches strips. Sew two strips into one 17 inch x 6 ¼ inch strip.

The middle section is made with two 6-inch by 9-inch fabric (floral fabric was used in original) sewn together to form a 6-inch by 17 ½-inch strip.

The top section requires two pieces of fabric 6 inches by 15 inches. Stitch two pieces together at center only 1-inch leave the upper 5 inches open.

Sew bottom section to middle section with a ¼ inch seam. Sew top section to the middle section to complete the front panel.

Pin pattern onto the front panel and cut the outer edge adding ¼ inch.

Step 3: Back section

The back is made with two pieces of fabric 9 inches by 17 ½ inches. Stitch the two pieces together at the center.

Pin pattern used for front on the back cut around the edge adding ¼ inch.

Put right sides together and sew the sides and bottom together starting 2 inches from the top and leaving the top open.

Fold the top two inches on the back to the inside of the pocket and the front two inches to the front for the apron-string tab. Sew a colorful binding to top of pocket and around the tabs in the front. Attach strings for ties.

Mary Duty's Pocket Pattern

Instructions

Step 1: Gather scrap fabrics -the original had 5 different fabrics.



Step 2: Front panel has three sections referred to as top, middle, and bottom. The bottom section is made by piecing small pieces (2 ½ inches by 4 ½ inches) to make two 9 inches by 6 ½ inches strips. Sew two strips into one 17 inch x 6 ¼ inch strip.

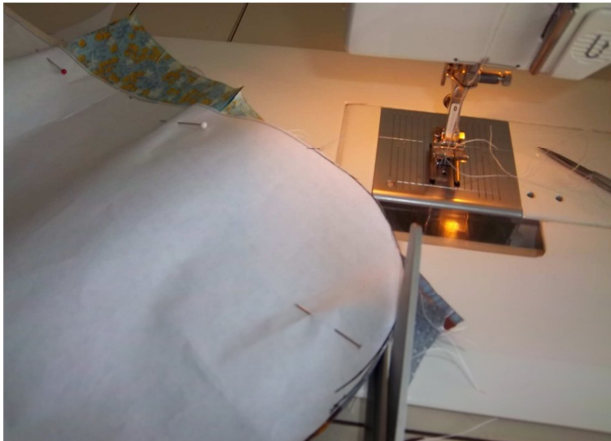
The middle section is made with two 6-inch by 9-inch fabric (floral fabric was used in original) sewn together to form a 6-inch by 17 ½ inch strip.

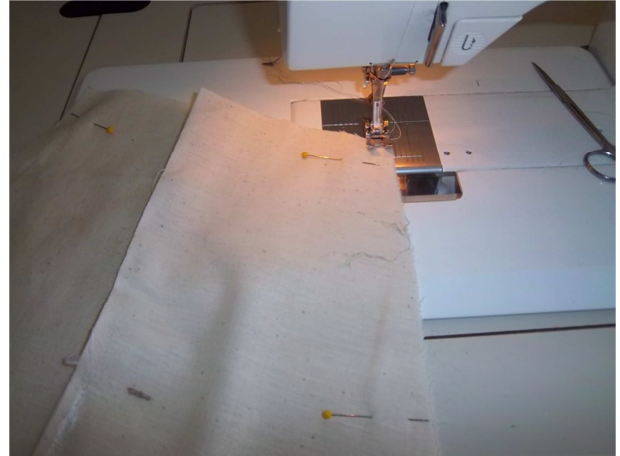
The top section requires two pieces of fabric 6 inches by 15 inches. Stitch two pieces together at center only 1-inch leave the upper 5 inches open.

Sew bottom section to middle section with a ¼ inch seam. Sew top section to the middle section to complete the front panel.

Pin pattern onto the front panel and cut the outer edge adding ¼ inch.





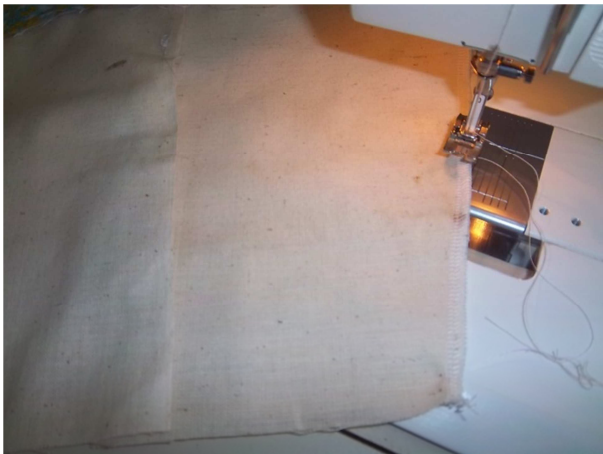


Step 3: Back section

The back is made with two pieces of fabric 9 inches by 17 ½ inches. Stitch the two pieces together at the center.

Pin pattern used for front on the back cut around the edge adding ¼ inch.

Put right sides together and sew the sides and bottom together starting 2 inches from the top and leaving the top open.



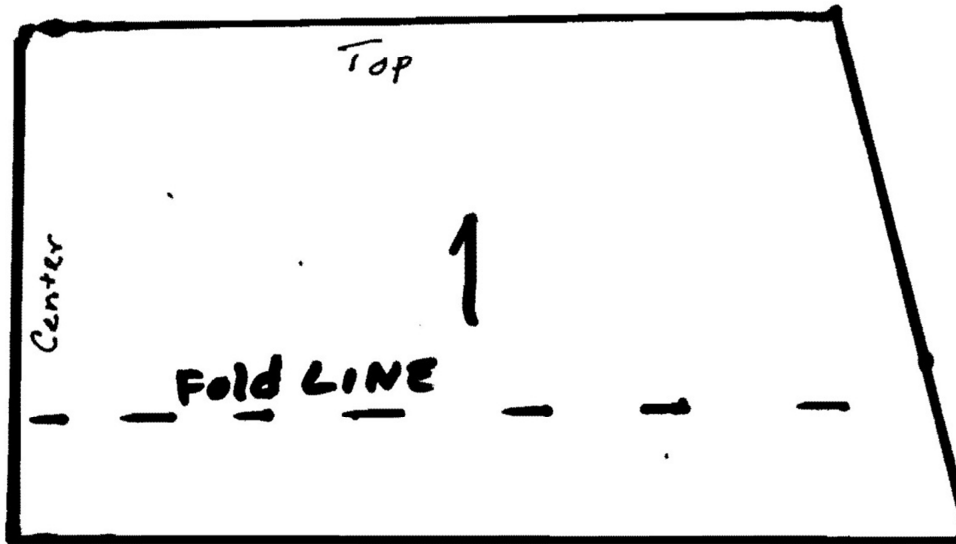


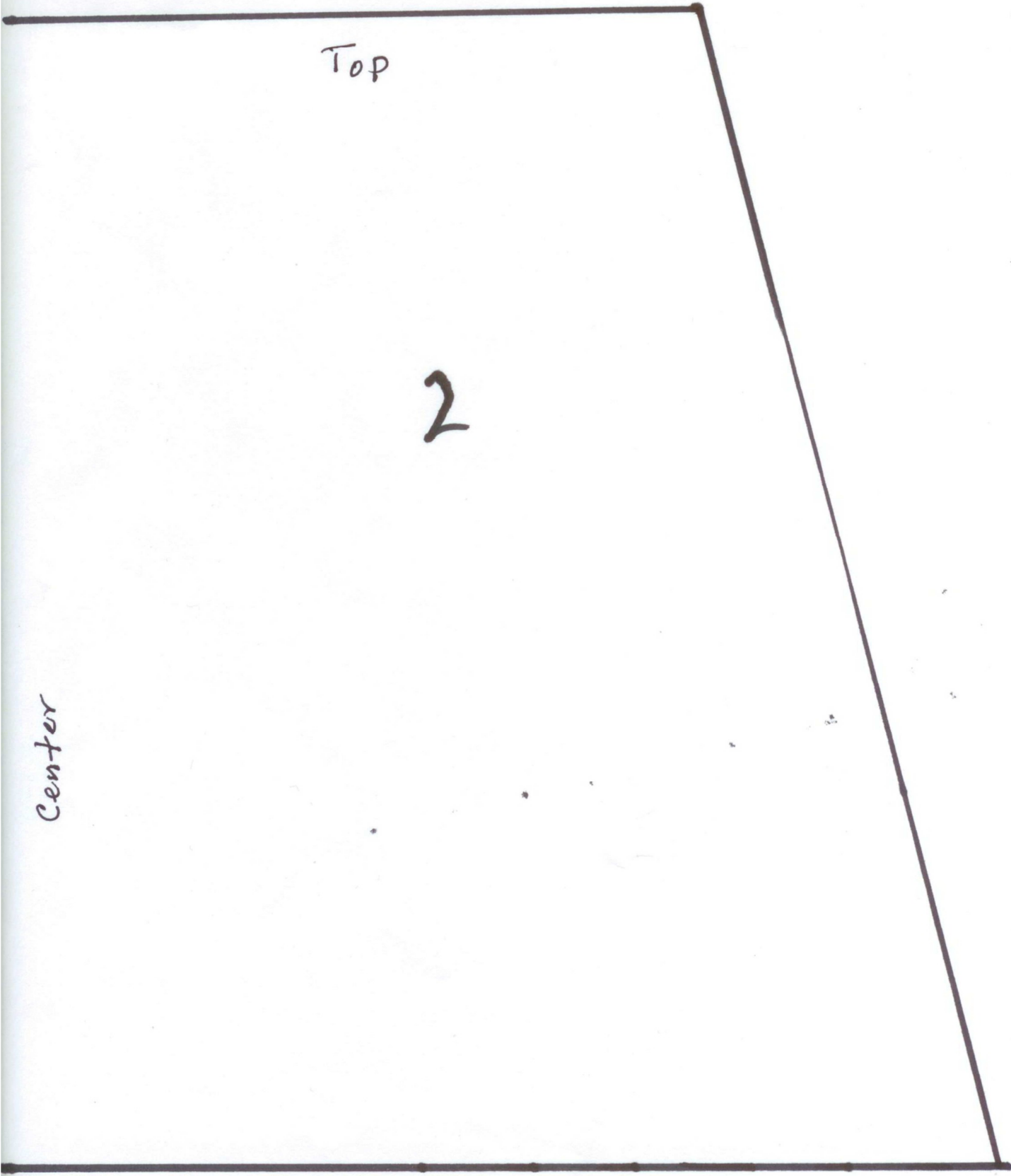
Fold the top two inches on the back to the inside of the pocket and the front two inches to the front for the apron-string tab. Sew a colorful binding to top of pocket and around the tabs in the front. Attach strings for ties.



Reproduced by Elaine Smith

PATTERN 1, 2, and 3





Top

2

Center

Center

Top

3